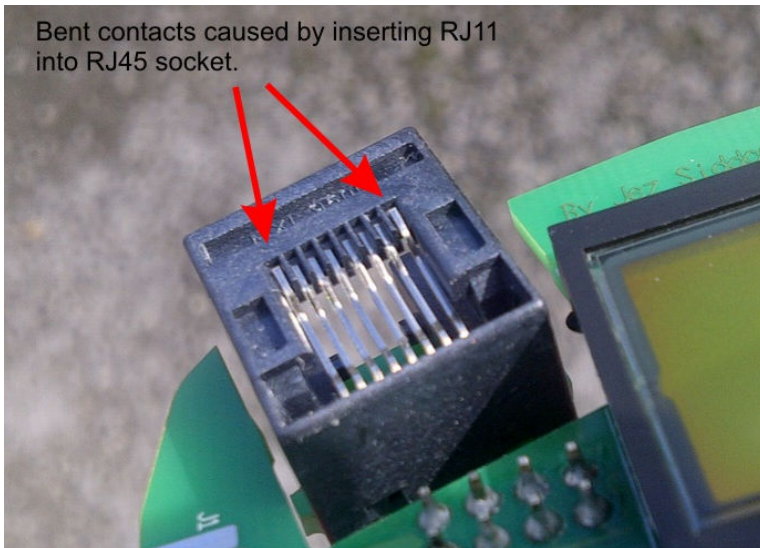


Damage is caused to Atlas IT (UTP05) by inserting RJ11 plug instead of RJ45



Result on screen:

```
Term+12345678
Atlas+*234567* +
```

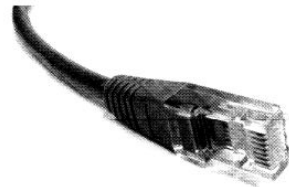
Warning that's in the user guide:

Atlas IT Network Cable Analyser
Model UTP05



PLEASE NOTE

This instrument is **ONLY** suitable for RJ45 plugs. This is confirmed on the front panel of your instrument.



Under no circumstances must any other type of connector be used, even if it seems to fit.

In particular, use of telephone style RJ11 connectors WILL damage the instrument socket and the terminator socket permanently, leading to intermittent faulty readings that you can't rely on.

We are unable to provide warranty cover for misuse (by using connectors other than RJ45 connectors). The damage to the connector is easy for us to identify and cannot be caused in any other way.

We want you to have trouble-free use of your instrument, please ensure you only test RJ45 connectors.